

# A Property for Your Consideration . . .

**Presented by :** Nicke Barefoot - The Barefoot Realtor  
CENTURY 21 City Real Estate Corp  
[nicke@barefoot-realtor.com](mailto:nicke@barefoot-realtor.com)  
Call Me At: 954-421-6794  
Office Phone: 954-752-8007



Margate

5784 N SABLE CIR

\$ 1,850

REF #: F1130826

Rent Price: \$ 1,750

Rent Date: 06/07/2011

Status: **Rented**

Subdivision:

≈GREAT HORIZONS PARK

Bedrooms: 3

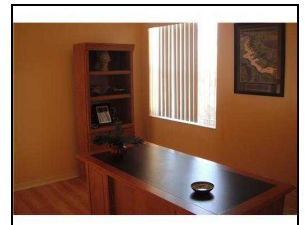
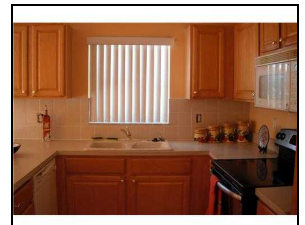
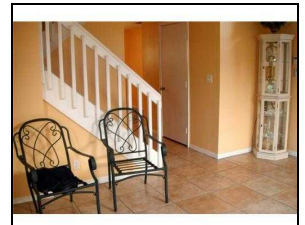
Full Baths: 2

Half Baths: 1

SqFt Liv Area: 1,757

Year Built: ≈1997/Resale

Faces: South



Garage: 2 / Attached

Carport: 0

Waterfront: Y / Lake Front

Cooling: Central Cooling, Electric Cooling

Freshly painted 2 story overlooking the lake. Loft/4th bedroom, Pine kitchen cabinets, accordion shutters, New laminate wood floors upstairs, all ceramic tile downstairs, Glass block windows. New Stainless/Steel Appliances.

Interior Features:

Foyer Entry/ Walk-In Closets

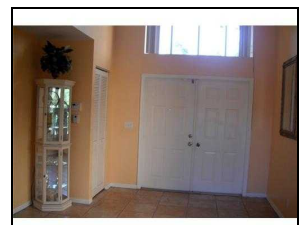
Exterior Features:

Hurricane Shutters

Amenities:

Lot Description:

Less Than 1/4 Acre Lot



Directions: CAPE SABLE IS ON THE W SODE OF 441 BETWEEN ROYAL PALM & SAMPLE RD JUST N OF NW MEDICAL, OFF 441 S OF SAMPLE ON R, FRONTAGE RD ON HORIZON N R ON SABLE & WIND AROUND